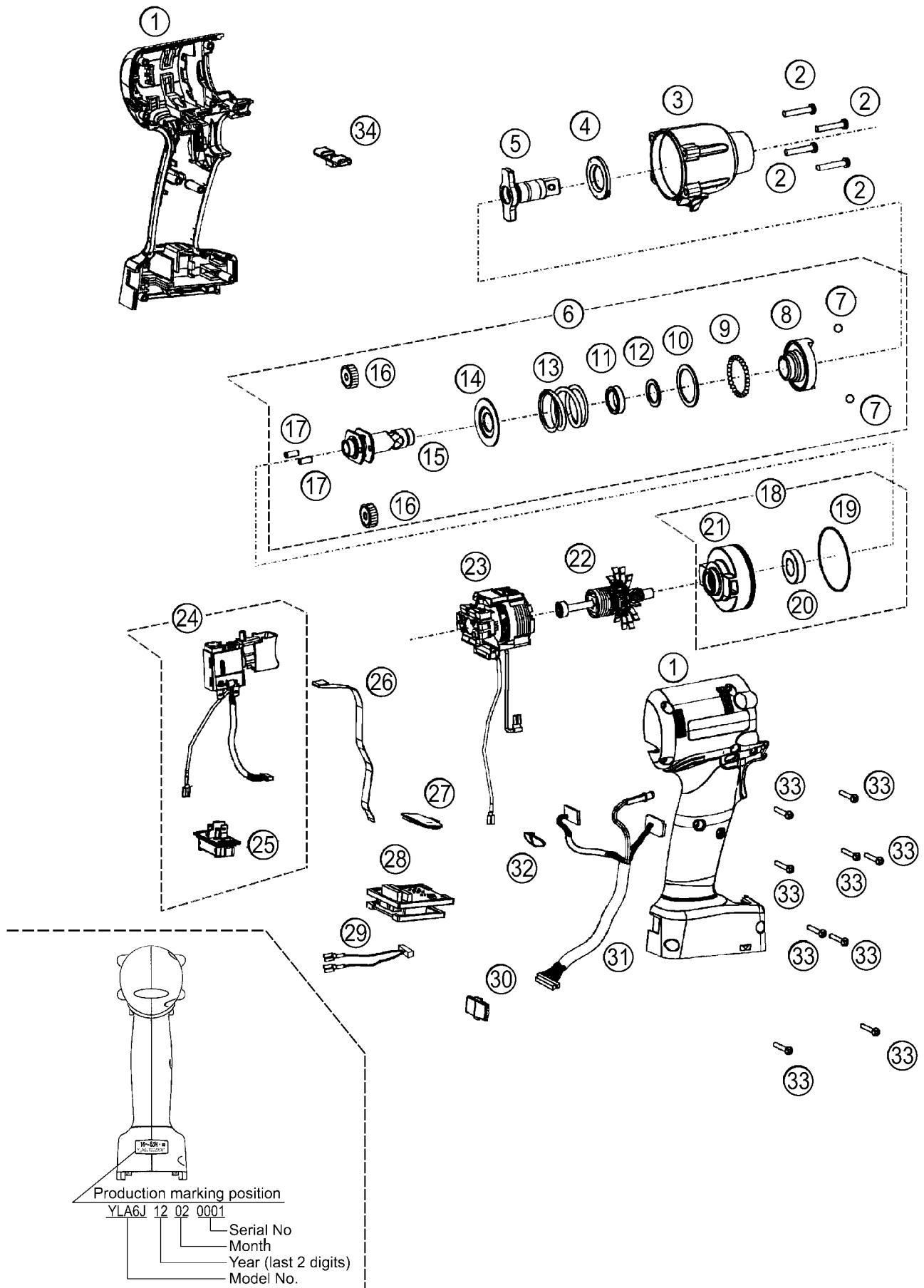


9.9. EXPLODED VIEW for EYFLA6J



9.10. REPLACEMENT PARTS LIST for EYFLA6J

| Safety | Ref. No. | Part No. | Part Name & Description | Quantity | Remarks |
|--------|----------|--------------|------------------------------------|----------|--------------------|
| | 1 | WEYFLA6JK3P9 | HOUSING AB SET | 1 | |
| | 2 | WEYFMA1JL968 | SEMS SCREW | 4 | (4*25) , (4PCS/PK) |
| | 3 | WEYFLA3JS317 | FIXATION COVER | 1 | |
| | 4 | WEY6631K0867 | SLIDER | 1 | |
| | 5 | WEYFLA6JL127 | ANVIL | 1 | |
| | 6 | WEYFLA3JL107 | DRIVING SHAFT ASSEMBLY | 1 | |
| | 7 | WEY7201L6966 | STEEL BALL | 2 | (7/32) , (2PCS/PK) |
| | 8 | WEYFLA3JL157 | HAMMER | 1 | |
| | 9 | WEY7205L6957 | STEEL BALL | 29 | (29PCS/PK) |
| | 10 | WEYFLA1AL087 | THRUST PLATE | 1 | |
| | 11 | WEYFLA3JL037 | CUSHION RUBBER | 1 | |
| | 12 | WEYFLA3JL087 | THRUST PLATE | 1 | |
| | 13 | WEY7541L0217 | HAMMER SPRING | 1 | |
| | 14 | WEY6508L1146 | SPRING FIXING PLATE | 1 | |
| | 15 | WEYFLA3JL137 | DRIVING SHAFT | 1 | |
| | 16 | WEY6504L1357 | PLANET GEAR | 2 | (2PCS/PK) |
| | 17 | WEY6506L1346 | PIN | 2 | (2PCS/PK) |
| | 18 | WEYFLA1AL007 | MOTOR MOUNTING PLATE ASSEMBLY | 1 | |
| | 19 | WEYT611L0967 | O-RING | 1 | (43.6*1.3) |
| | 20 | WEYFLA1AL497 | BEARING | 1 | |
| | 21 | WEY7205L0037 | MOTOR MOUNTING PLATE | 1 | |
| | 22 | WEYFLA1AL147 | MOTOR ROTOR ASSEMBLY | 1 | |
| | 23 | WEYFLA1AL118 | STATOR | 1 | |
| | 24 | WEYFLA1AK207 | SWITCH ASSEMBLY | 1 | |
| | 25 | WEY7540L2157 | BATTERY TERMINAL BLOCK | 1 | |
| | 26 | WEYFLA1AL207 | RIBBON CABLE | 1 | |
| | 27 | WEYFLA1AK337 | OPERATION PANEL | 1 | |
| | 28 | WEYFLA4AL219 | MODULE ASSEMBLY | 1 | |
| | 29 | WEYFLA1AL297 | HARNESS | 1 | |
| | 30 | WEYFLA3JL337 | DISCERNMENT PLATE | 1 | |
| | 31 | WEYFLA3JL227 | LED ASSEMBLY | 1 | |
| | 32 | WEYFLA1AL377 | TIGHTENING CONFIRMATION LAMP COVER | 1 | |
| | 33 | WEY6930K9037 | TIGHT SCREW | 9 | (K3*20) |
| | 34 | WEYFLA1AK327 | F/R SELECTOR HANDLE | 1 | |
| | - | WEYFLA4AR819 | OPERATING INSTRUCTIONS | 1 | |
| | - | WEYFLA1AK838 | HEAT-RESISTANCE TAPE | 1 | (30M) |
| | - | WEWGW2 | FLOIL GREASE | 1 | (AH-137N-2) |
| | - | WEY002X8977 | GREASE (DOUBREX) | 1 | |